

Discovery Green® - Downtown Houston, Texas



Photo by Katya Horner

FACT SHEET

WHAT

Discovery Green

DESCRIPTION

Discovery Green, Houston's premiere urban park, opened in April 2008. What will you discoverSM amongst the park's 12 acres of urban green space? Features include a one-acre lake; a children's playground; interactive water features; a multi-use amphitheater stage and sloping lawn; small and large dog runs; various public art works; Houston Public Library Express office; large lawn space; and great dining from The Grove and The Lake House restaurants operated by Schiller Del Grande Restaurant Group.

The park has active **FREE Spring, Fall and Winter** programming seasons featuring cultural art performances, films, live music, exercise, flea market, hands-on children's activities, writing workshops and more.

The ICE at Discovery Green presented by Houston First, along with beautiful temporary public art, punctuate the Winter season. The ICE, the largest outdoor ice skating rink in the Southwest United States, is made from recycled water from the park's model boat basin.

LOCATION

Downtown Houston, 1500 McKinney

Discovery Green is located across Avenida de las Americas from the George R. Brown Convention Center and the Hilton Americas Hotel. Toyota Center, Houston Center and Minute Maid Park are only blocks away.

SIZE

11.78 acres

GREEN OPERATIONS

Discovery Green is committed to sustainable design and operation. Located in the middle of an urban center with access to public transportation, **Discovery Green** provides storage for cyclists and is served by REV Houston, the free electronic taxi for downtown and midtown. **Discovery Green** obtains 100% of its power from renewable sources, including solar and other efficient technologies.

In October 2009, **Discovery Green** achieved LEED Gold Certification, making it the first completed LEED Gold project for new construction in downtown Houston.

Get to **Discovery Green** via the Greenlink bus service and B-Cycle program. METRORail users can to the Green or Purple Line and get off at the Convention District stop. Information about downtown parking can be found at downtownhoustonparking.org.

MANAGEMENT

Discovery Green Conservancy. The Conservancy is the first private non-profit organization in Houston to be responsible for managing all aspects of a major park's ongoing operations.

Barry Mandel, President
Susanne Theis, Programming Director
Clark Curry, Operations Director
Melinda Parmer, Finance and Admin Director

CONTACT

www.discoverygreen.com or (713) 400-7336

BOARD OF

Larry Faulkner, Chair

DIRECTORS

F. Xavier Peña, Secretary/Treasurer, Houston Endowment, Inc.
Barry H. Caldwell, Director, Waste Management, Inc.
Zane Carson Carruth, Director, Carson Marketing, LLC
Thomas H. Castro, Director, El Dorado Capital
Linda Evans, Director
Saundria Chase Gray, Director, Shell Oil Company
Chaille Hawkins, Director
Stan Leong, Director
Nick Massad, Director, The Sam Houston Hotel
Roxann Neumann, Director, Silver Eagle Distributors
Nancy Pittman, Director, The Brown Foundation
Julie Young Sudduth, Director, IBERIABANK
Polly Whittle, Director, Kinder Foundation
Nancy Kinder, Ex-Officio, Kinder Foundation
Robert Eury, Ex-Officio, Central Houston
Dawn Ullrich, Ex-Officio, Houston First Corporation

Dr. Maconda B. O'Connor, The Brown Foundation, Inc. (Founding board member; deceased)

HISTORY

Discovery Green was the vision of Mayor Bill White and the dedication of some of Houston's most generous citizens who worked to transform two surface parking lots into a dynamic urban space. A public private partnership was created between the City of Houston and the Discovery Green Conservancy. The first step in the process of creating Houston's new park was to seek input from Houston's own residents, in a series of public meetings and focus groups, to identify what the city's diverse population valued in an outdoor destination. The group also investigated the best practices of a wide range of parks in other great cities. An ambitious plan was developed to create an uncommonly beautiful space with a vibrant program of diverse events.

Since opening in April 2008, **Discovery Green** has become a desirable urban gathering place for Houstonians and the millions of visitors to the city of Houston, a model for other public spaces and a catalyst for economic development in downtown Houston.

PROJECT COST

\$125 million

THE NAME

The Conservancy sought the help of the public by creating a contest to name the park. More than 6,200 entries were submitted, and "**Discovery Green**" was selected as it fit the personality of the park, invited discovery and education, delight and surprise.

DESIGN

The **Discovery Green** design team included Hargreaves Associates, PageSoutherlandPage and Lauren Griffith Associates. Artists Margo Sawyer and Doug Hollis were integral members of the design team and produced three works of art for the park. A large team of local and international engineers and specialists supported the core design team. Learn more about the [History of Discovery Green](#).

AWARDS

- Business Week/Architectural Record "Good Design is Good Business"
- Austin Chapter AIA Design Award
- Houston Chapter AIA Design Award (The Grove)
- ULI-Houston Development of Distinction Award
- USGBC-Houston Outstanding Environmental Project
- IIDA Texas/Oklahoma Design Excellence for Hospitality (The Grove)

- Society of American Registered Architects Design Award of Excellence (The Grove)
- Brick in Architecture Gold Award
- Gulf Coast Chapter, ASID. Best in Show (The Grove)
- Central Houston Inc. Allen Award for Civic Engagement (2008)
- *Texas Construction's* Best of 2008 Award
- Texas Downtown Association President's Awards Program for the Best Public Improvement (2009)
- Public Relations Society of American Houston Bronze Quill – Integrated Marketing Award (2009)
- First World Architecture News (WAN) Effectiveness Awards (2011)
- American Marketing Association “Best of” Winner in the Venues & Arenas Category (2011)
- Finalist-Selected for 2011 Urban Land Institute Amanda Burden Urban Open Space Award (2011)
- American Marketing Association Marketer of the Year Award (2012)
- Public Relations Society of America Houston Award - Special Publications, Silver (2013)
- Public Relations Society of America Houston Award - Events and Observances, Silver (2013)
- Future Landmark Award, Preservation Houston Pier & Beam (2014)



This Season at *Discovery Green* – Winter 2015

Most events are free and open to the public.

Discovery Green offers an array of activities including outdoor ice skating, family-friendly films, beautiful public art, skating with Santa and more! Select programming listed below. Visit www.discoverygreen.com for full event schedule.



- The ICE presented by Houston First**
Nov. 24, 2015—Feb. 7, 2016
 Ice skating returns to Downtown Houston this holiday season! The 7,716 square-foot ice skating surface, the largest in the Southwest, is kept at a frosty 22° F! Skate outdoors with the majestic Houston skyline as the backdrop. The rink will be open daily, including holidays. Admission is \$14 per person, which includes tax and skate rental. The \$30 Speed Pass guarantees priority entrance. For more information visit www.discoverygreen.com/ice.
- Los Trompos* designed by Ignacio Cadena and Héctor Esrawe**
Nov. 14, 2015—March 22, 2016
 Come play! Mexican designers Esrawe and Cadena created this interactive exhibition of 20 larger-than-life, brilliantly colored “trompos,” or “spinning tops” of various shapes, colors, and sizes! Free. <http://www.discoverygreen.com/lostrompos>
- Field of Light* by Bruce Munro**
Nov. 24, 2015 – Feb. 21, 2016
Discovery Green dazzles with a second realization of the captivating, site-specific art installation, *Field of Light*, by British artist Bruce Munro. Field of Light comprises 4,500 radiant, frosted glass spheres atop slender stems connected by illuminated fiber optic. discoverygreen.com/fieldoflight.
- Friday Night Sightings!**
Fridays, Nov. 27 – Feb. 26 (except Dec. 25 and Jan. 1), 7 pm
 Experience *Los Trompos* or *Field of Light* through free performances by Houston artists created especially for these magnificent works of art. Visit discoverygreen.com for more details.
- Bank of America Screen on the Green**
Thursdays, Nov. 26-Feb. 4, 7 pm (except Dec. 24 and 31)
 Watch a movie from the hill or catch a peek from The ICE! Discounts for Bank of America card holders and employees.



MILESTONES

December 2004	Land Acquired/Donation by the City of Houston/ Formation of non-profit Houston Downtown Park Conservancy (now Discovery Green Conservancy)
July 2005	Design Began
October 2006	Park Construction Began/Groundbreaking Ceremony/ Name Announcement
December 2007	\$54 million in private donations achieved for Building Campaign
January 2008	The Grove Restaurant opens/Convention District Garage opens
March 1, 2008	“One for Doc” Preview Concert at the park
April 13, 2008	Discovery Green opens
November 2008	The Ice at Discovery Green , Holiday Skating on Kinder Lake opens
April 2009	One Year Anniversary Half a million visitors 400+ free high-quality public and private events 42,000 skaters at The Ice at Discovery Green 600+ news stories about the park
August 2009	1 million visitors
September 2009	Discovery Green Team membership giving program established
October 2009	Discovery Green achieves LEED Gold status
December 2009	Administaff Holiday Balloon, two-month holiday attraction, premieres
April 2010	Two Year Anniversary 1.7 million visitors

800+ free high-quality public and private events
40,000+ skaters at The Ice at **Discovery Green**
1500+ news stories about the park

April 2011	Hosted NCAA Big Dance concerts generating thousands of park visitors
May 2011	Finalist – Selected for 2011 Urban Land Institute Amanda Burden Urban Open Spaces Award
September 2011	Insperity Golf Experience, three-month mini golf attraction, premieres
March 2012	Received American Marketing Association Marketer of the Year Award
April 2013	Discovery Green celebrates its fifth anniversary with installation of Architects of Air.
September 2013	Dedication of Jim Dine's <i>The House (Heart)</i> in Maconda's Grove
October 2013	Formation of Discovery Green Public Art Committee
March 2014	Unveiling of the Hess Deck
November 2014	Installation of Bruce Munro's <i>Field of Light</i> along the Brown Foundation Promenade
November 2015	Installation of <i>Los Trompos</i> designed by Mexico City designers Hector Esrawe and Ignacio Cadena

PARK FEATURES (AS OF NOVEMBER 2015)

ANDREA AND BILL WHITE PROMENADE

This walkway forms the heart of the park and offers a 360-degree view of Houston's skyline.

KINDER LAKE

Kinder Lake, encompassing more than an acre of the park, features water gardens and a model boat area, a shallow pool specifically designed to accommodate remote-controlled watercraft operated by park goers of all ages.

THE GROVE AND TREEHOUSE

Overlooking the park's live oaks, Schiller Del Grande's destination restaurant and rooftop bar offer patrons exceptional food, service and views of the park.

THE LAKE HOUSE

The Lake House offers fast, casual, family-friendly food, with views of Kinder Lake and the Jones Lawn.

ANHEUSER-BUSCH STAGE AND FONDREN FOUNDATION PERFORMANCE SPACE

This amphitheater hosts a variety of performances, including music, theater, film and dance, and is oriented toward a sloped lawn for audience seating. When the platform is not in use, it is open to all park goers, either as space to work, lounge or dine near The Lake House café.

JONES LAWN

The Jones Lawn is the park's largest green space, providing ample area for major events or pick-up sports.

BROWN FOUNDATION PROMENADE

The Brown Foundation Promenade is shaded by 100-year-old oak trees, the largest of which is the Nancy G. Kinder Oak near Avenida de las Americas, one of four large live oaks moved to the park.

JOHN P. MCGOVERN CHILDREN'S PLAYGROUND

The playground is carved into an existing, tree-shaded hill, which shields youngsters from the surrounding streets and integrates the theme of the major migratory bird flyway over Houston. Individual species are represented in the play sets, and accompanying signage educates visitors.

THE ALKEK BUILDING

Overlooking the Gateway Fountain and John P. McGovern Children's Playground, this building houses the park's staff, information center and public restrooms.

GATEWAY FOUNTAIN

The fountain offers a visual gateway to the park for visitors approaching from McKinney Street and is an extension of the playground area. Two systems of jets create a myriad of water activity atop a gently sloping granite surface, with 14-foot high arcing jets serving as gateway landmarks and smaller jets cycling on and off to invite park visitors for a closer look or some fun in the spray.

THE DECK

The first new addition to the park since its opening, 4,700-square-foot raised deck was installed in Spring 2014 adjacent to the Brown Promenade under the century-old live oak trees. The deck provides a shady place where visitors can relax, eat, read and enjoy the various sights and sounds of the park. In keeping with the park's mission, the deck is made from sustainable materials.

PUBLIC ART AT DISCOVERY GREEN®

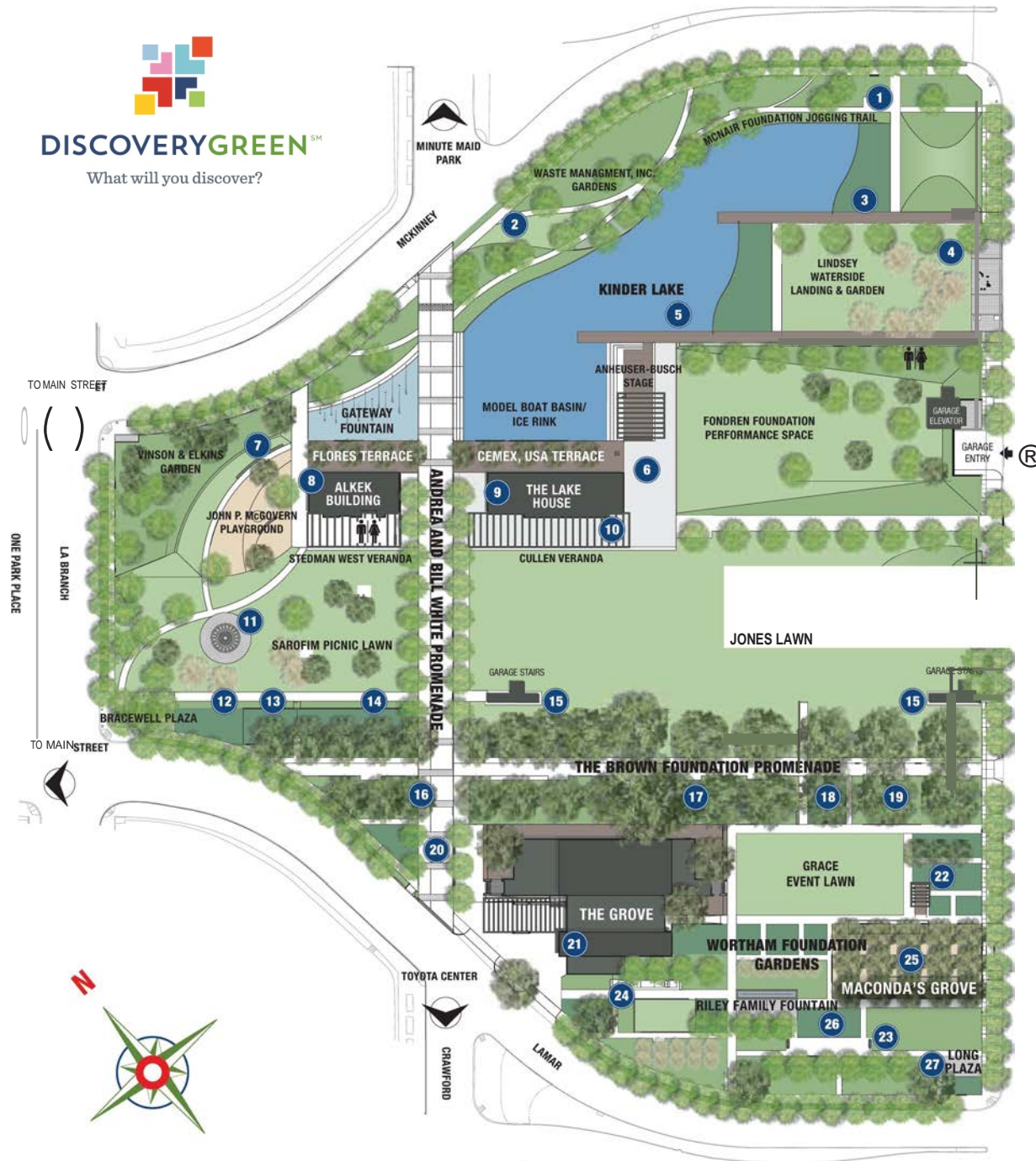
Discovery Green® features works by artists Margo Sawyer and Doug Hollis. Great care was taken to ensure the art installations would be visually prominent, yet at home in the park's environs. In addition, Jean Dubuffet's *Monument Au Fantome*, an iconic sculpture by this world-renowned artist, has been relocated to the park. The park also features temporary public art throughout the year. Visit www.discoverygreen.com/art for information on current installations.





DISCOVERYGREEN SM

What will you discover?



© A — ERICA HOTE

11



- McNair Foundation Jogging Trail
Clifford and Doris Faulkner Sealing Area
- 2 Waste Management, Inc. Gardens
Compass Bank Waterside Lawn
- 3 Merrill Lynch & Co. Pier
Cooper Industries Water Garden
- 4 Lindsey Waterside Landing & Garden
Monument au Fantome, a gift from the Duncan Family
Houston Astros Garden Grove
- 5 Kinder Lake
Carruth Lake Lights
- 6 Anheuser-Busch Stage
Fondren Foundation
Performance Space
David Mitzner Plaza
- 7 Gateway Fountain
Vinson & Elkins Garden
John P. McGovern Playground
BP Solar Panels
- 8 Alkek Building
Flores Terrace
Stedman West Veranda
Simmons Family Stage
BP Solar Panels
- 9 The Lake House
Cemex USA Terrace
- 10 Cullen Veranda
Morgan Reading Room
Powell Foundation Reading Room
HPL Express
BP Solar Panels
- 11 Sarofim Picnic Lawn
Mist Tree, a gift from Faye Sarofim
- 12 Bracewell Plaza
Devon Energy Global Garden
Robert R. and Kay M. Onstead
Foundation Walk
- 13 Harriet and Joe Foster Dog Run
Burguiere Foundation Seating Area
Greg and Gretchen Tharp Fountain
- 14 Kinder Large Dog Run
Friends of Lily, Kelly & Sadie Kinder
Seating Area
Wells Fargo Seating Area
The Bela Fountain
- 15 Jones Lawn
Synchronicity of Color
- 16 Andrea and Bill White Promenade
L.H. and C.W. Duncan Foundation
Seating Area
Marathon Oil Bike Racks
- 17 The Brown Foundation Promenade
CenterPoint Energy Seating Areas
- 18 Bernice Hevrdejs Butterfly Garden
Sanders Hummingbird Garden
Beverly and Staman Ogilvie Seating Area
JP Morgan Chase Bench Area
- 19 Jimi Derrick's Arbor
Wachovia Securities Seating Area
Nancy G. Kinder Oak
- 20 Jack C. Alexander Plaza
Lily Chen Foster Garden
- 21 The Grove and the Treehouse
- 22 Grace Event Lawn
Allen Family Rose Garden
Lynda L. Transier Bandstand
- 23 Wortham Foundation Gardens
Mary Lents Native Plant Garden
Fulbright & Jaworski LLP Garden
Tom Fricke Foundation Garden
- 24 Hagstette Putting Green
Michelle Rozzell Bulb Garden
Trini's Shuffleboard Court
- 25 Maconda's Grove
Carruth Foundation Bocce Courts
- 26 Riley Family Fountain
Listening Vessels, a gift from
Maconda Brown O'Connor
Jackie Martin Family Scent Garden
- 27 Ray C. Fish Foundabon Bench Area
Long Plaza
Mithoff Family Foundation
Chapman and Clea's Garden